

# Fine Arts La Biennale

Paris, Grand Palais

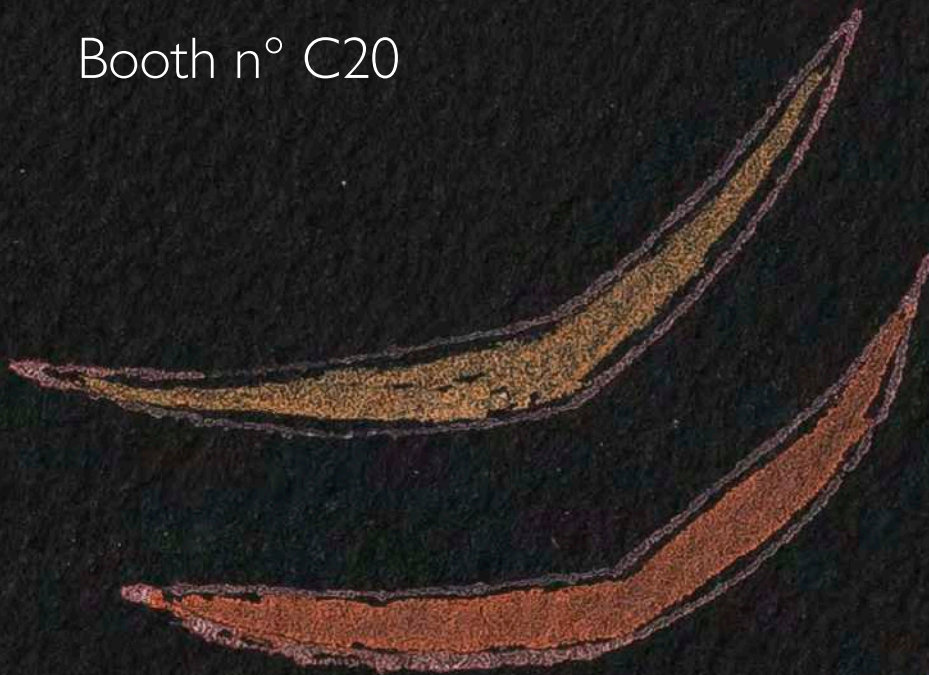
By invitation 21 November 2024

Public Days 22 - 27 November 2024

11.00 am – 8.00 pm

Booth n° C20

DAVID LÉVY  
MODERN & POSTWAR ART



Amedeo MODIGLIANI

Auguste RODIN

Henri HAYDEN

Roger de LA FRESNAYE

Francis PICABIA

Vassily KANDINSKY

Frantisek KUPKA

Jean DUBUFFET

Baltasar LOBO

Maurice ESTÈVE

Josef ALBERS

Alberto BURRI





Amedeo MODIGLIANI (1884 – 1920)

*Standing Caryatid, raised arms*

c. 1911 – 1912

Charcoal on paper

Signed lower right *Modigliani*

18.7 x 12.4 in (47,5 x 31,5 cm)





Auguste RODIN (1840 – 1917)  
*The Age of Bronze (Moyen modèle or First reduction)*

Conceived in 1875-1876, this reduced version in 1903-1904, this cast in 1944-45  
Bronze with nuanced brown patina  
Signed Rodin on the terrace along the right side, with the foundry mark *Alexis Rudier*  
*/ Fondateur Paris* on the back right and with the inner stamp  
41 x 15 ¼ x 12 ¾ in. (104.5 x 39 x 32.6 cm)

MAISON DESCENTE  
DES MARINS





Henri HAYDEN (1883 – 1970)

*À la Descente des Marins*

1917

Oil on canvas

Signed and dated lower right: *Hayden 1917*

Titled lower left: *A la descente des marins*

23 x 28.5 in (58,5 x 72,5 cm)







Roger de LA FRESNAYE (1885 – 1925)  
*L'Homme au foulard rouge*

1921  
Oil on canvas  
Signed lower left *La Fresnaye*  
13 <sup>3</sup>/<sub>4</sub> x 10 <sup>3</sup>/<sub>4</sub> (35 x 27 cm)





Francis PICABIA (1879 – 1953)

*Untitled*

Ca. 1923-24

Crayon, ink and watercolor on paper

Signed lower right *Francis Picabia*

16 <sup>3</sup>/<sub>4</sub> x 11 <sup>5</sup>/<sub>8</sub> in (42,4 x 29,5 cm)

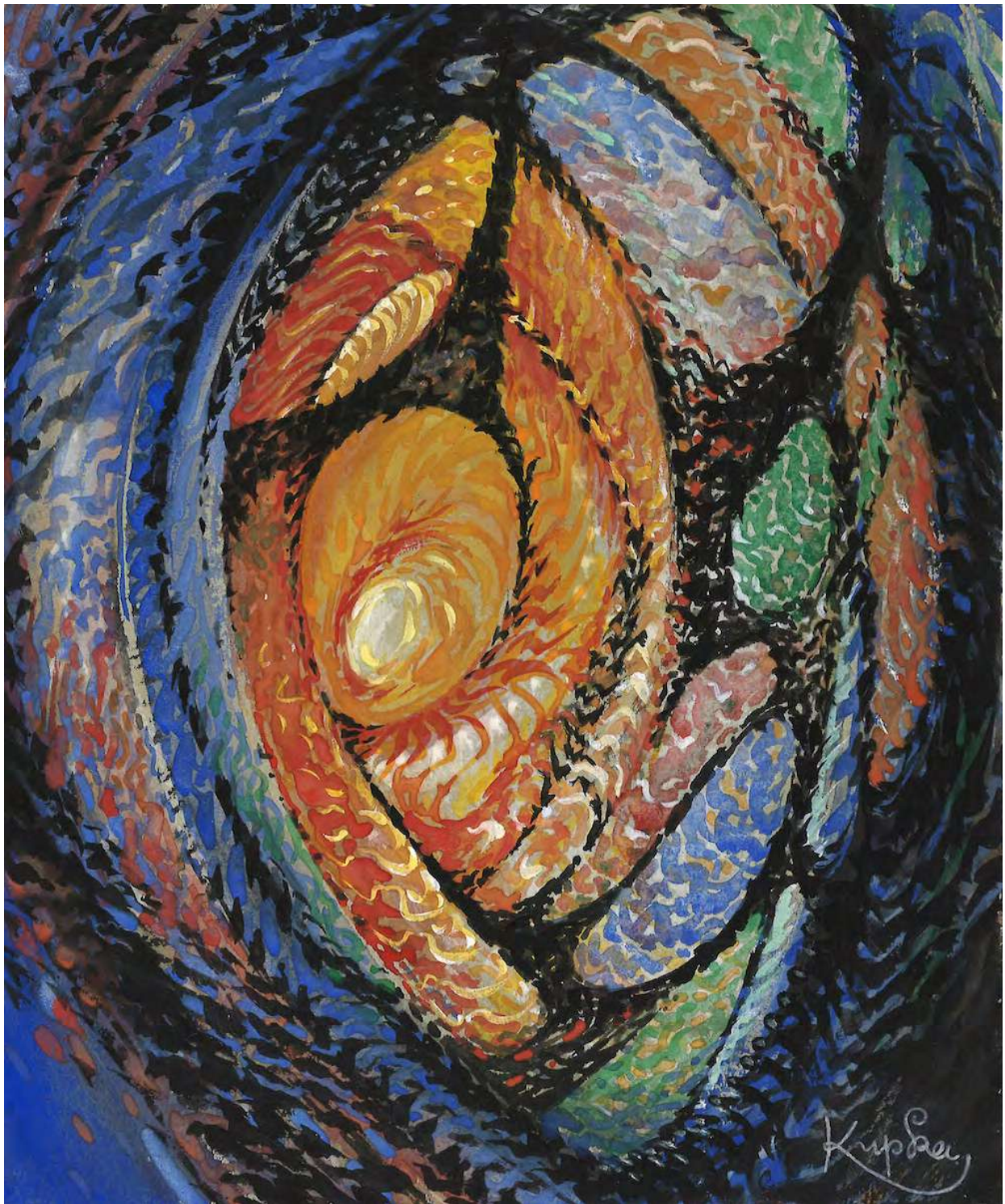




Vassily KANDINSKY (1866 – 1944)  
*Untitled (719/1941)*

1941  
Gouache and gold on black paper  
Signed and dated lower left K/41  
12 ½ x 19 ½ in. (32 x 49,5 cm)





Frantisek KUPKA (1871 – 1957)

*Study for Traits, plans et profondeur*

1920-1925

Gouache and watercolor on paper

Signed lower right *Kupka*

9 ¼ x 7 ½ in. (23,5 x 19,3 cm)



J. Dubuffet  
47





Jean DUBUFFET (1901 – 1985)

*Le dentiste*

1947

India ink and coloured inks on paper mounted on a cardboard support

Signed and dated top left, small paper loss bottom centre

Dedicated to Jean Paulhan top left

19 ¼ x 13 in. (49 x 33 cm)





Baltasar LOBO (1910 – 1993)

*Contemplation*

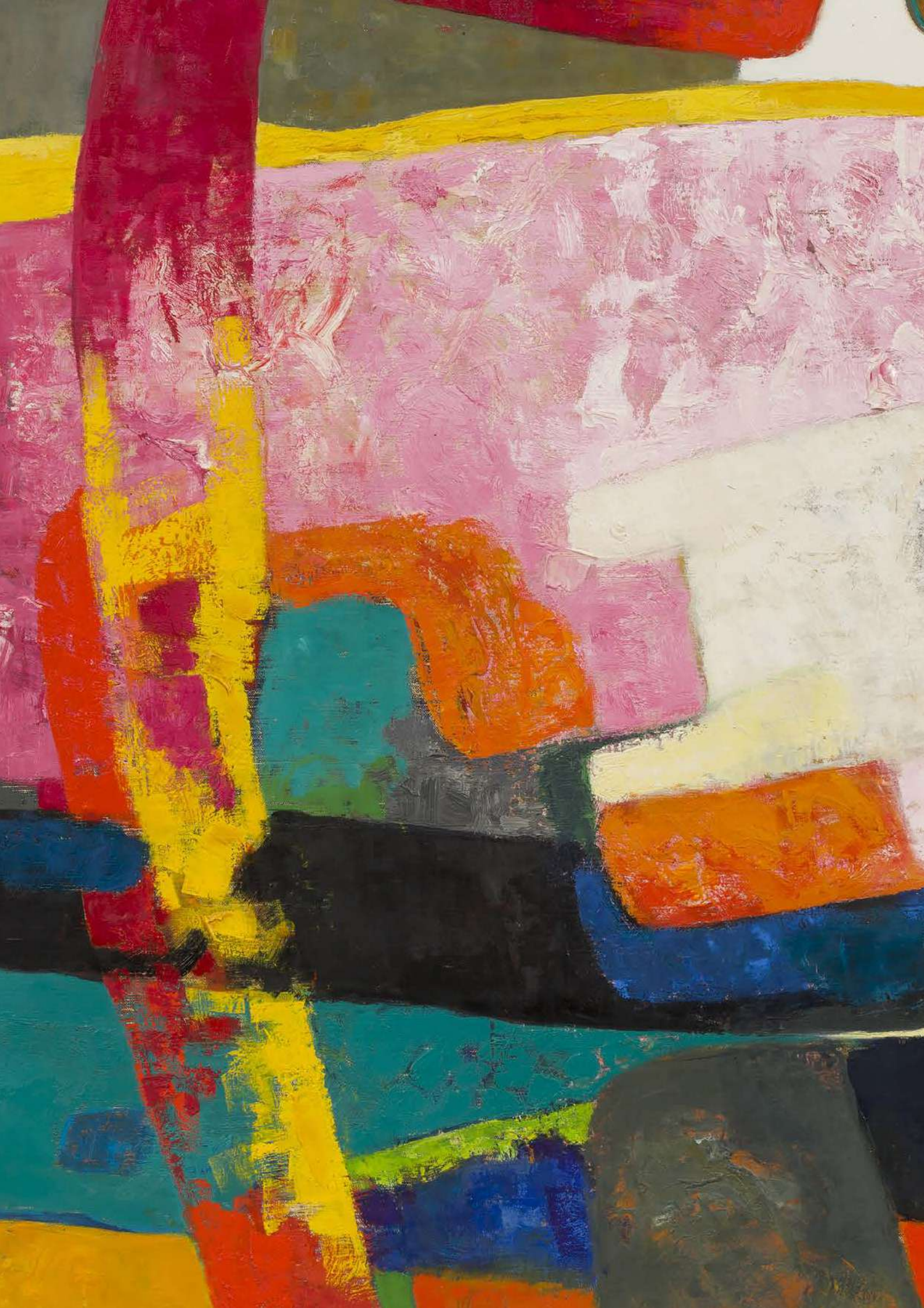
1956 – Cast in 1960

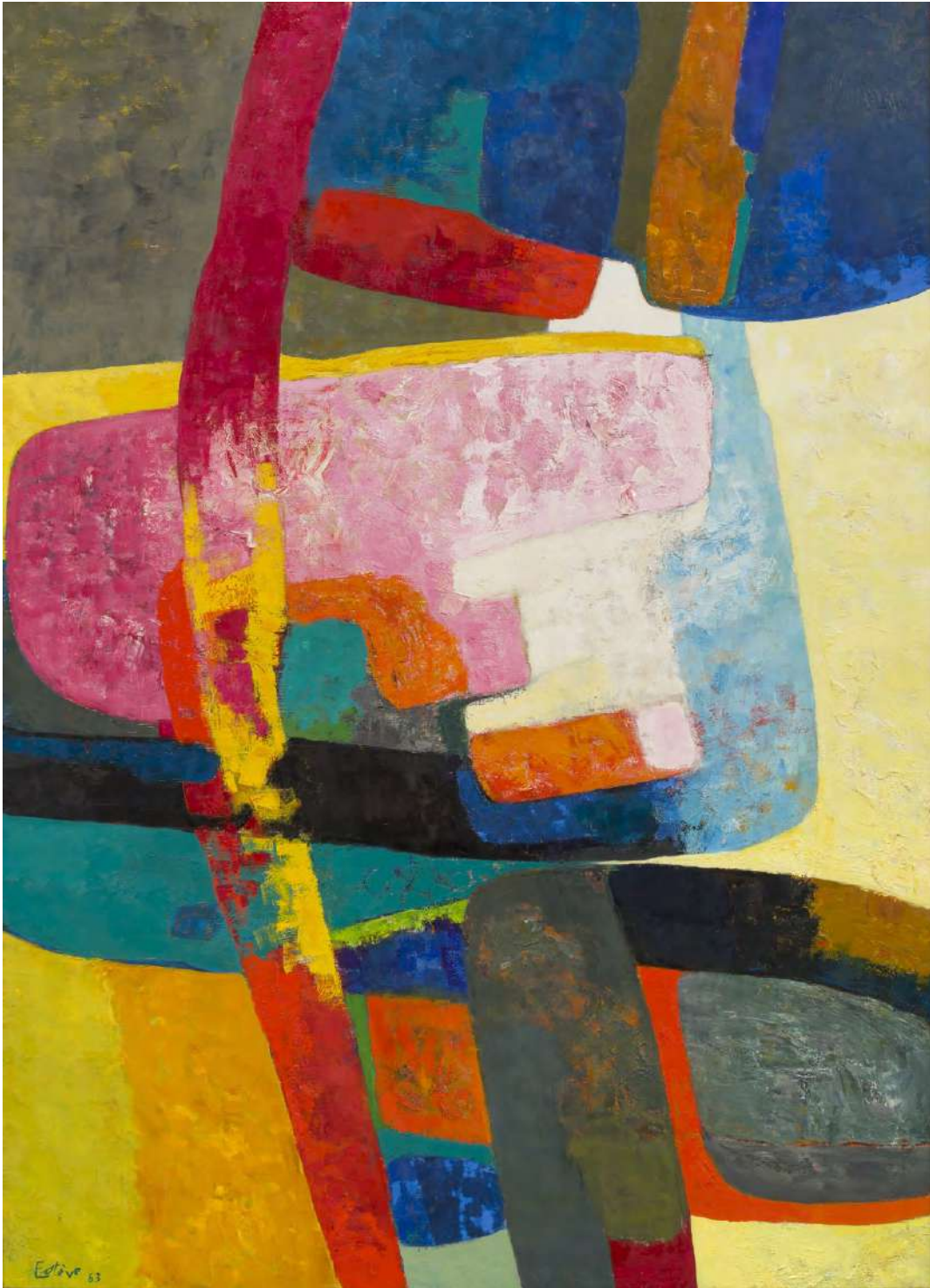
Bronze

Signed *Lobo* and numbered 1/6

Edition of 6 + 4 artist's proofs + 2 off-the-shelf by the foundry Susse Frères, Paris

11 x 13  $\frac{3}{4}$  x 5  $\frac{3}{4}$  in. (28 x 35 x 15 cm)





Maurice ESTÈVE (1904 – 2001)  
*Montavent*

1963

Oil on canvas

Signed and dated lower right *Estève 63*

Signed, dated and titled on the reverse

39 ½ x 28 ¾ in. (100 x 73 cm)





Jean DUBUFFET (1901 – 1985)

*Escalier I*

3 march 1967, reworked on the 18<sup>th</sup>, 19<sup>th</sup> and 20<sup>th</sup> April 1967

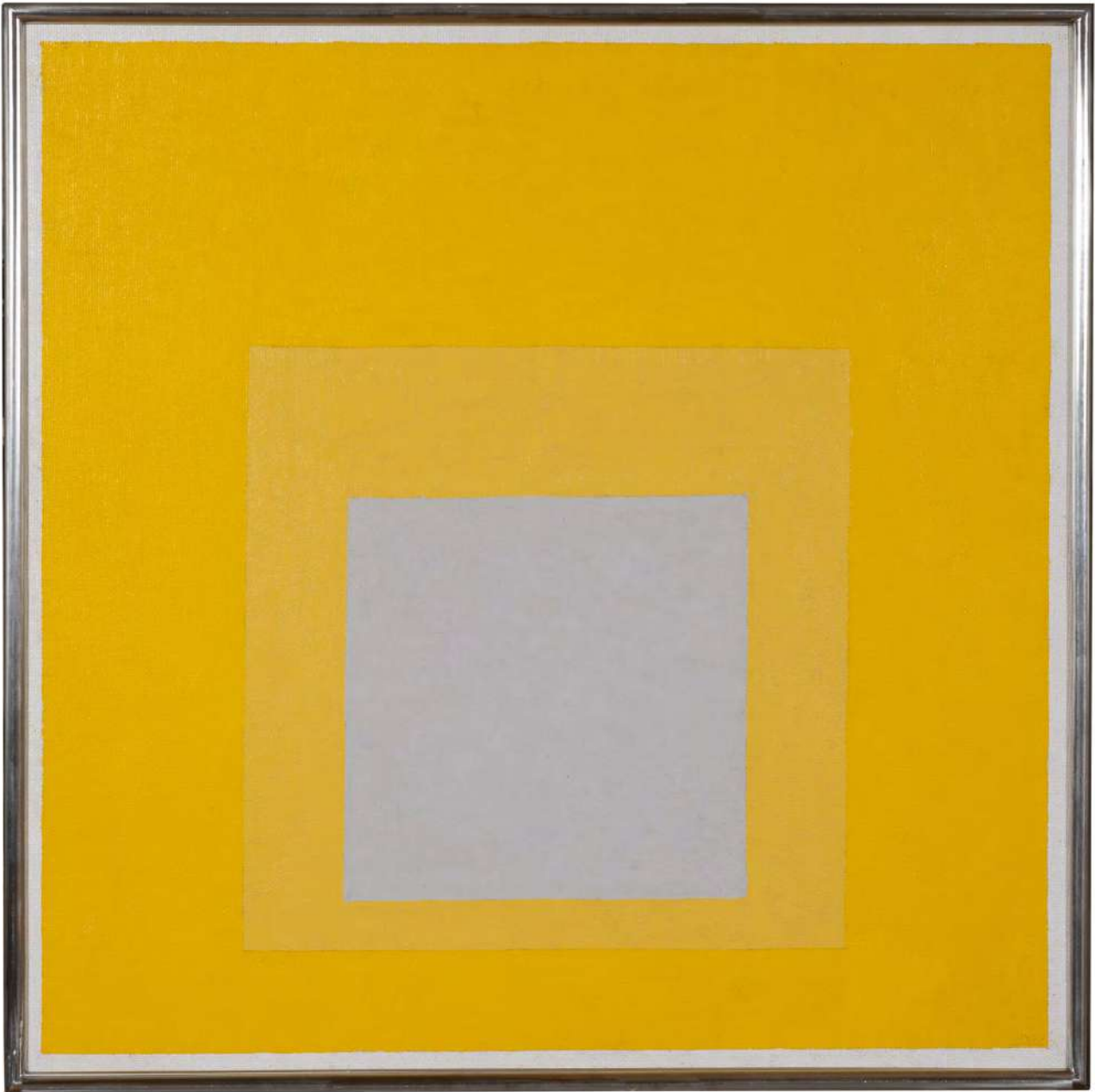
Vynil on canvas

Signed and dated lower left

51 ¼ x 38 ¼ (130 x 97 cm)







Josef ALBERS (1888 – 1976)

*Study for Homage to the Square: Decided*

1957

Oil on Masonite

Signed with the artist's monogram and dated "57" lower right; signed titled and dated "Study for Homage to the Square: Decided Albers 1957" on the reverse

24 x 24 in. (61 x 61 cm.)





Alberto BURRI (1915 – 1995)

*Cellotex*

1991

Celotex, acrylic and vinavil on plywood

27 ½ x 39 ½ (70 x 100 cm)

## David Lévy et Associés

info@levy david.com  
+32 (0) 475 661225

199 Avenue Albert  
1190 Brussels  
Belgium

10 Avenue Matignon  
75008 Paris  
France

[www.davidlevy.art](http://www.davidlevy.art)